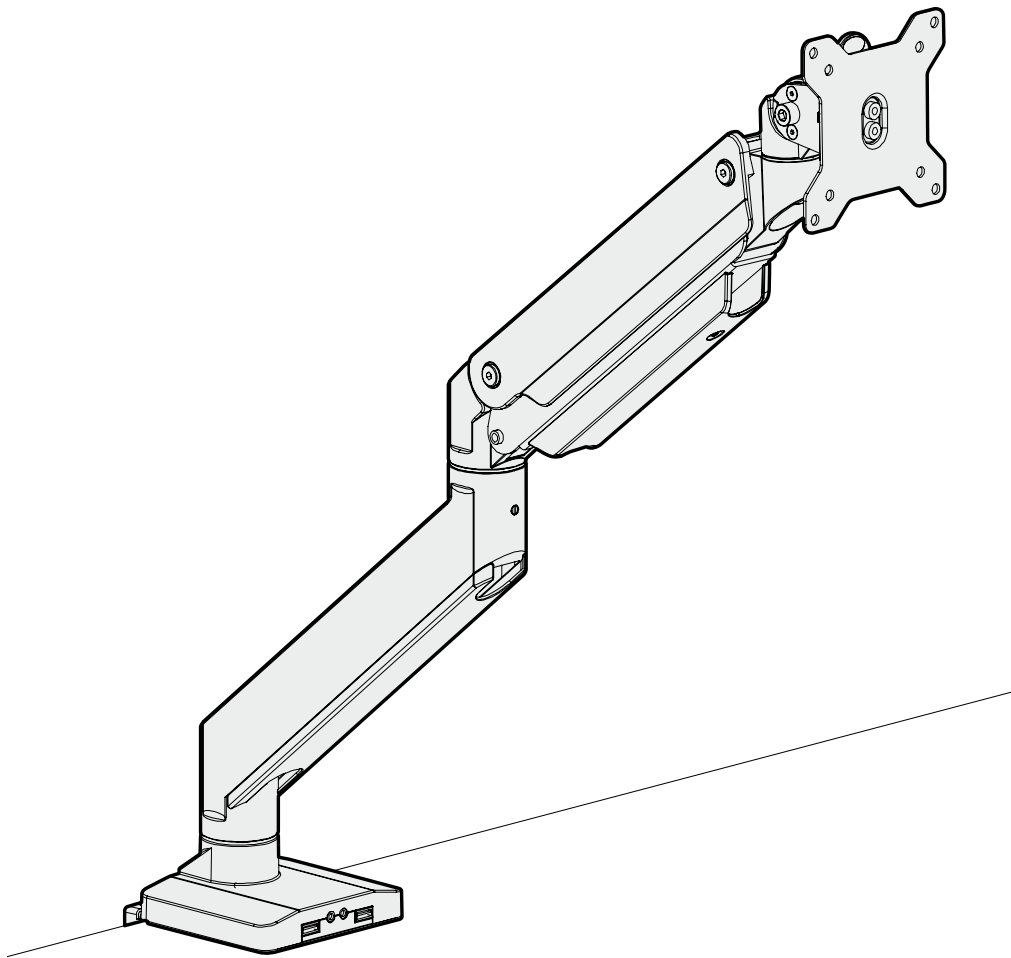


# Crestview Single Monitor Arm

MON031

UPLIFT DESK



For assembly assistance,  
visit [upliftdesk.com/contact](https://upliftdesk.com/contact),  
call 800-349-3839,  
or email [info@upliftdesk.com](mailto:info@upliftdesk.com)

©2023 UPLIFT Desk®. All Rights Reserved

Scan QR code for  
product webpage



## Safety and Warnings



**CAUTION:** Read all instructions before assembly. Failure to assemble or operate properly may result in damage or personal injury. Retain manual for future reference.



**Warning:** This product contains a spring mechanism that can cause injury. Be careful when removing monitors as the arm can spring up when the weight of the monitor is removed.

Under no circumstances does the manufacturer accept warranty or liability claims for damages caused from improper use of this product. Please provide these instructions to any new user or owner of the product.

## Package Contents

Base	Upper Clamp	Lower Clamp	Upper Arm	Lower Arm
Upper Base Plate	Lower Base Plate	Adhesive Pad	VESA Plate	Wire Cover

## Hardware Components

Allen Wrenches Set of three: 3mm, 4mm, 6mm	M6 x 12 Flathead Screw qty 4	M4 x 12 ScREW (M-A) qty 4	M5 x 12 ScREW (M-B) qty 4	M5 Washer (M-C) qty 4

**WARNING:** This product contains a spring mechanism that can cause injury. Be careful when removing monitors as the arm can spring up when the weight of the monitor is removed.

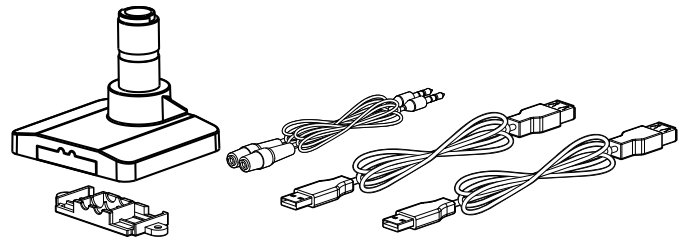
**Note:** There are two ways to attach to your desktop: Clamp and Bolt-through mount. Determine if you need to attach it around the back side of your desk or through a hole from 0.4" to 3.15" in diameter.

**Acceptable monitor weight range:** 2.2 to 33 lb

**Desktop thickness compatibility:** Clamp Method: 0.4"-3.3" thick | Bolt-through Method: 0.4"-1.8" thick

## Step 1 - Clamp

If you purchased the Crestview Monitor Arm Wiring Kit, assemble that FIRST, before proceeding. Refer to the separate instructions contained in the Crestview Monitor Arm Wiring Kit (ACC076) package for complete details.

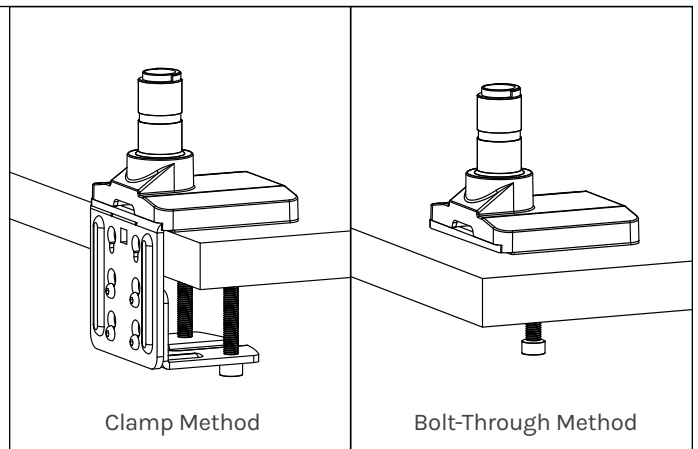


## Step 2

Determine your mounting method. There are two ways to attach the Crestview Single Monitor Arm to your desktop:

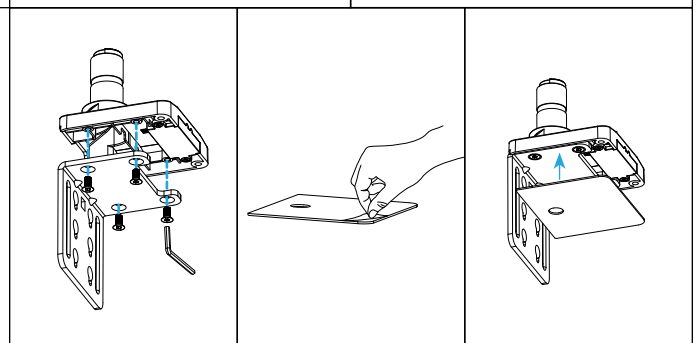
**Clamp Method:** If you would like attach the monitor arm along the back edge of your desktop, follow the Clamp Method instructions (Steps 3 - 5) and ensure your desk is between 0.4" and 3.3" thick.

**Bolt-Through Method:** If you prefer to attach the monitor arm through your desktop, skip steps 3 - 5 and follow the Bolt-Through Method Instructions (Steps 6 - 9) and ensure your desk is between 0.4" and 1.8" thick.



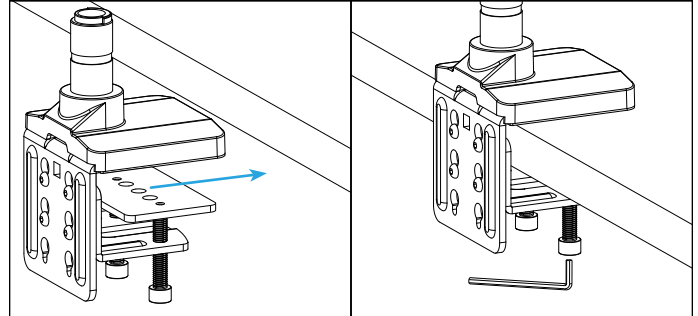
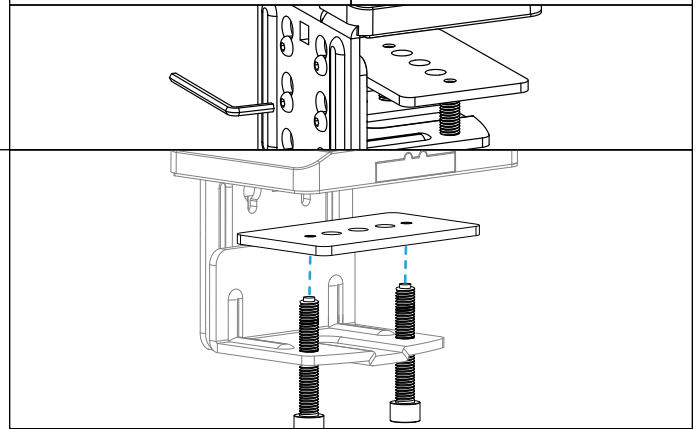
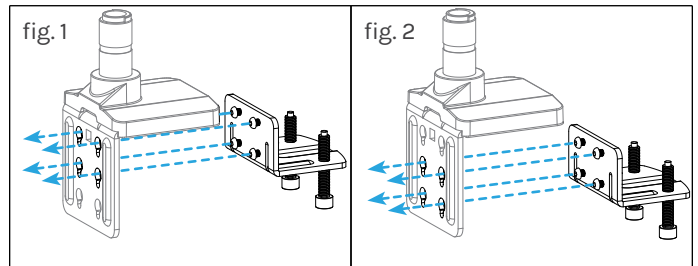
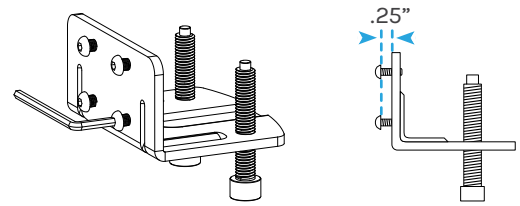
## Step 3 (Clamp Method)

- Align the Upper Clamp with the Base in the orientation shown. Attach using four M6 x 12 Flathead Screws and the 4mm Allen Wrench.
- Then peel the adhesive backing off of the Adhesive Pad and attach it to the bottom of the Base and Upper Clamp as shown. Align the pad with the front edge of the Base first, then work to the back.



## Step 4 (Clamp Method)

- Use the 4mm Allen Wrench to adjust the four pre-installed screws on the back of the Lower Clamp so that there are about 0.25" of thread between the plate and screw heads.
- Insert the four screws of the Lower Clamp through four of the key slot holes in the back of the Upper Clamp as shown. There are two sets of key slot holes to choose from for different desktop thicknesses.
  - For Desks 0.4" to 2.25" use the top four key slot holes (fig. 1)
  - For Desks 2" to 3.3" use the bottom four key slot holes (fig. 2)
- Slide the Lower Clamp assembly down so that the screws are at the bottom of the key slot holes then tighten screws with 4mm Allen Wrench.

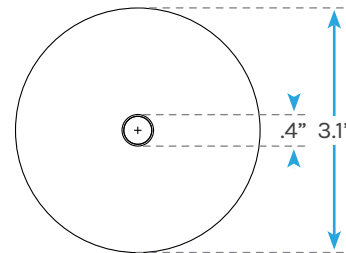


## Step 5 (Clamp Method)

- Using the 6mm Allen Wrench, adjust both bolts on the bottom of the Lower Clamp so that the opening is wide enough to accommodate the thickness of the desktop and Lower Base Plate.
- Place the outer holes of the Lower Base Plate onto the tips of the bolts as shown.
- Slide the assembly onto the back of the desktop, then tighten the bolts using the 6mm Allen Wrench. Alternate from one bolt to the other, to allow the Lower Base Plate to rise evenly before finally tightening to the desktop.
- If you chose the Clamp Method for mounting, please skip the Bolt-Through Method Steps 6-9 and proceed with Step 10.

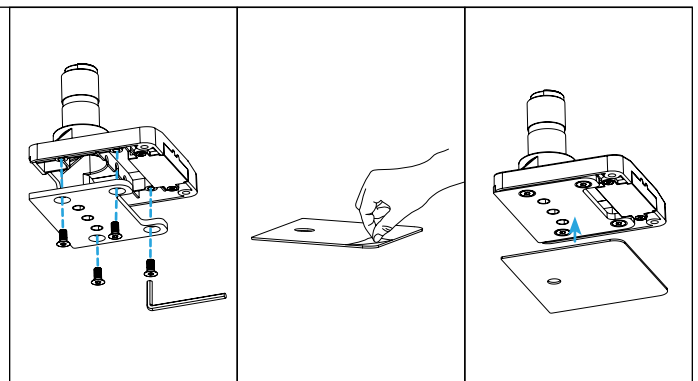
## Step 6 (Bolt-Through Method)

Ensure the desktop has a hole between 0.4" and 3.1" in diameter to use this option. Using a grommet hole that is already in your desktop is acceptable, or you can drill a 0.5" hole anywhere on your desktop.



## Step 7 (Bolt-Through Method)

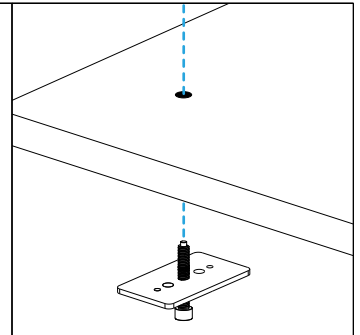
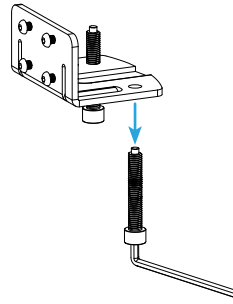
- Align the Upper Base Plate with the Base in the orientation shown and attach it using the four M6 x 12 Flathead Screws and the 4mm Allen Wrench.
- Then peel the adhesive backing off of the Adhesive Pad and attach it to the bottom of the Base and Upper Base Plate as shown. Align the pad with the front edge of the Base first, then work to the back.





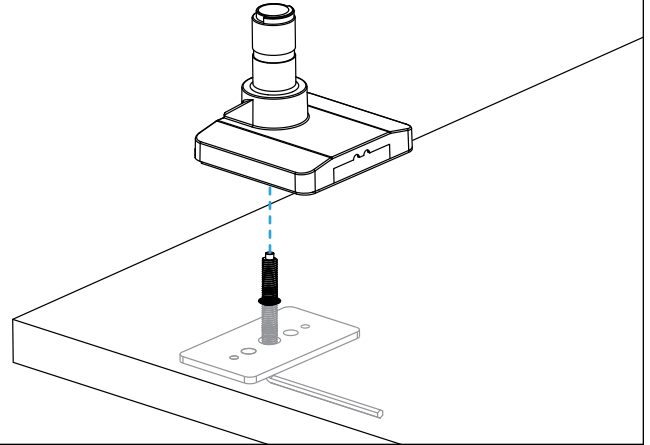
## Step 8 (Bolt-Through Method)

- A. Remove one of the bolts from the bottom of the Lower Clamp using the 6mm Allen Wrench. Slip it through the Lower Base Plate's center hole as shown.
- B. If assembling on an adjustable height desk, raise the desk so the desktop hole is easier to see. Then insert the bolt through the desktop hole from below, and hold them in place.



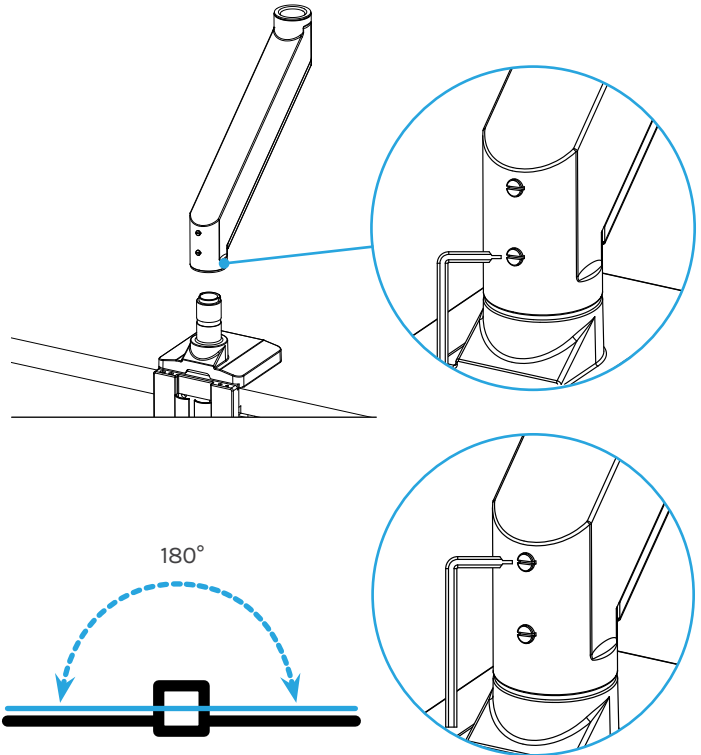
## Step 9 (Bolt-Through Method)

- A. While holding the Lower Base Plate and bolt in place from below, line up the hole of the Base assembly (from Step 7) with the top of the bolt.
- B. Make sure the front of the Base assembly is facing towards the front of the desk. Hold the Base assembly in place on top as you hand tighten the bolt from below to get the threads started. Once the bolt is started, you can let go of the Lower Base Plate. Use the 6mm Allen Wrench to finish tightening the assembly to the desktop.
- C. Proceed with the Arm Assembly, Step 10.



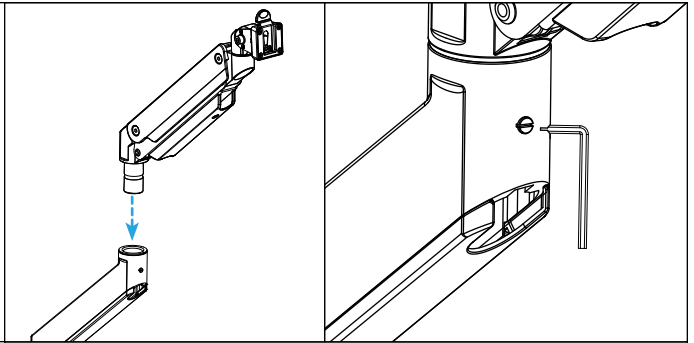
## Step 10

- A. Slide the Lower Arm onto the post of the Base until it is fully seated and tighten the lower set screw with the flat-head end of the 3mm Allen Wrench (or a small flat head screwdriver). This will secure the Lower Arm to the Base and keep it from becoming separated during adjustment.
- B. The Lower Arm can swivel a full 360° or can be set to allow only a range of 180°.
  - To allow 360° of rotation, leave the upper set screw alone, and the Lower Arm will rotate a full 360° around past the back of the desk.
  - To limit the Lower Arm to only 180° of rotation, tighten the upper set screw. This setting is helpful when your desk is located against a wall or you are installing a privacy panel to the back of the desk. Do not over-tighten this set screw, doing so may hinder arm movement.



## Step 11

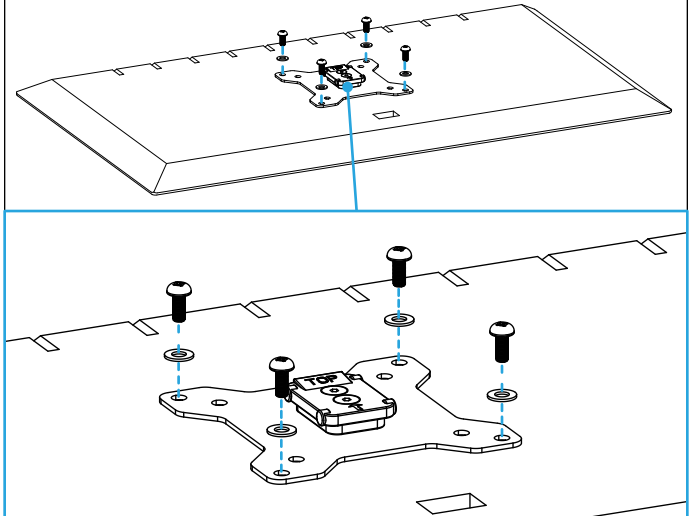
- A. Slide the Upper Arm into the hole on the Lower Arm until it is fully seated
- B. Tighten the set screw on the Lower Arm with the flat-head end of the provided 3mm Allen Wrench (or a small flat head screwdriver). This will prevent the Upper Arm from becoming separated from the Lower Arm during adjustment.



## Step 12

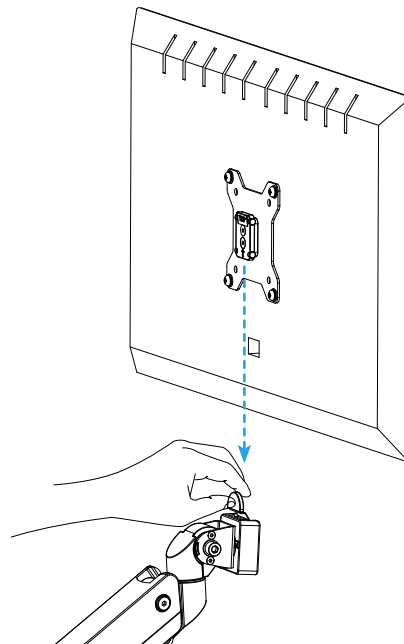
**Reminder:** Acceptable monitor weight range for the Crestview Single Monitor Arm is 2.2 lb to 33 lb.

- A. Lay your monitor face down on a clean surface or a towel to prevent damage to your screen.
- B. Test the M4 x 12 and M5 x 12 Screws in your monitor's screw holes to determine which is the right size for your monitor.
- C. Line up the holes of the VESA Plate with the holes on your monitor. Make sure the word "TOP" is facing the top of the monitor.
- D. Attach the VESA Plate to the monitor using the selected screws with the M5 Washers.



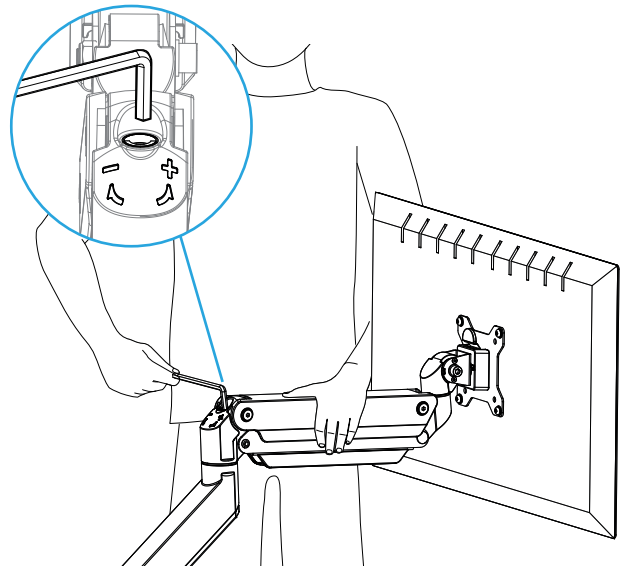
## Step 13

- A. Pull the tab on the Upper Arm back and slide the VESA Plate in (as shown in the illustration) until the tab on the Upper Arm clicks into place
- B. Pull up slightly on your monitor to make sure it is locked securely in place.



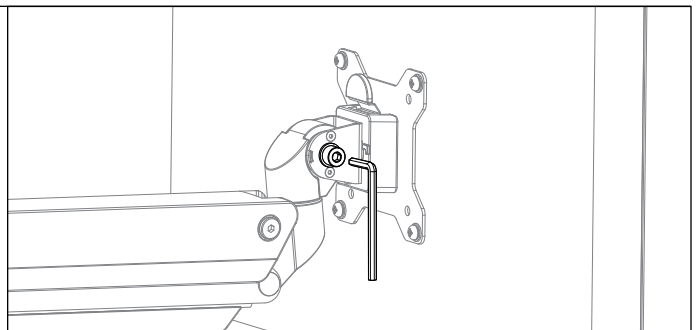
## Step 14

- A. Move the monitor to any position and release it. If the monitor does not drift up or down, the Arm is properly counterbalanced.
- B. If the Arm does not remain where you positioned it, you will need to adjust the tension of the gas spring to properly support the weight of your monitor.
  - If the monitor drifts down when you let it go, hold the Arm in a horizontal position as shown and use the 6mm Allen Wrench to turn the adjustment screw toward the “+” until the monitor remains in place when you let go.
  - If the monitor drifts upward when you let go, turn the adjustment screw towards the “-” until the monitor remains in place when you let go.



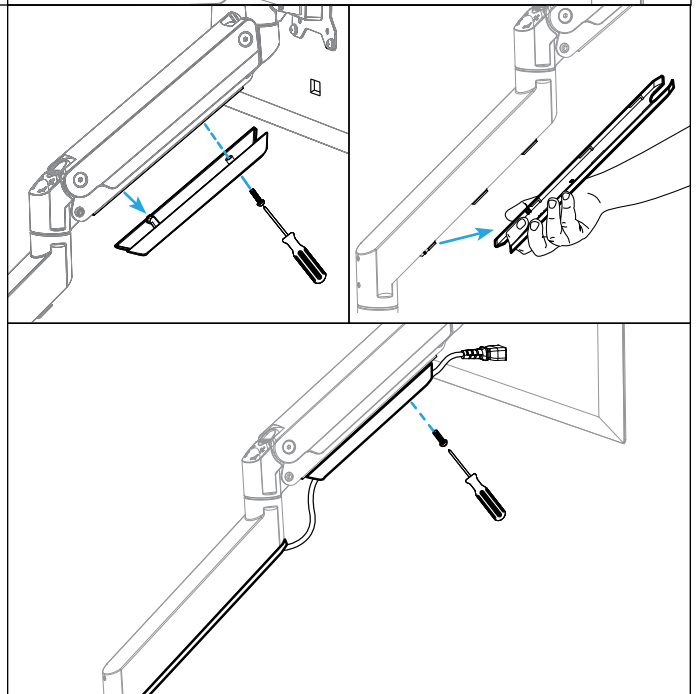
## Step 15

- A. To adjust the front and back tilt of your monitor, loosen the socket head screw on the side of the VESA Mount with the 6mm Allen Wrench.
- B. Once the monitor is at your preferred viewing angle, re-tighten the screw with the Allen Wrench to hold the monitor in place.



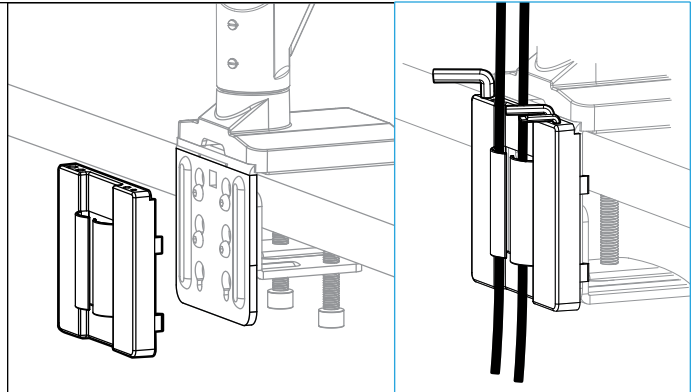
## Step 16

- A. To use the Arm's wire management, first remove the built-in wire covers.
- B. The Upper Wire Cover is located on the bottom side of the Arm and is held in place by a screw at the top end and a clip at the bottom end. Remove the screw with a Phillips head screwdriver and slide the cover slightly toward the Worksurface to disengage the clip and remove the cover.
- C. The Lower Wire Cover is located on the Lower Arm and is removed by hooking a finger through the bottom opening in the cover, then holding it firm while pulling it forward to unlock.
- D. Run your cables under the Arms where the wire covers were located and then replace the covers. Your cables should run through each end of both the Upper and Lower Wire Covers.
- E. Reinstall the screw to secure the Upper Wire Cover.



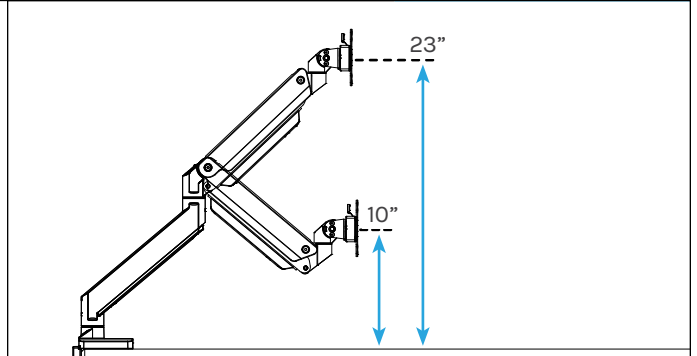
## Step 17

- A. If you have selected the Clamp Method, you can now snap the Wire Cover onto the back of the Upper Clamp as shown and insert your monitor cables through the two integrated clips.
- B. The Wire Cover adds 0.8" to the back of the Clamp assembly. If your desk is close to a wall or cubicle or has a privacy panel attached to the back of the desktop, there may not be enough space available to attach the Wire Cover.



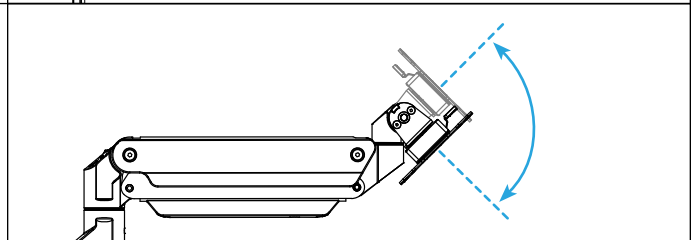
## Height Adjustment

The center of the VESA mount can go as high as 23" and as low as 10" from the desktop.



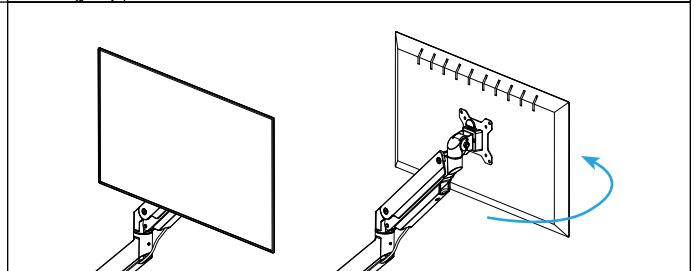
## Monitor Tilt

The Monitor can tilt at the VESA mount forward or backward within a range of 90° (+/-45°).



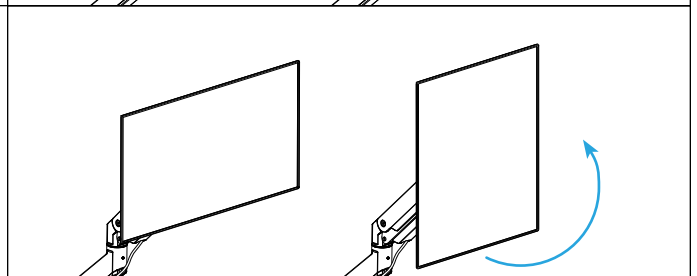
## Monitor Swivel

The Monitor can swivel 180° (+/-90°) at the hinge at the top of the Upper Arm.



## Monitor Rotation

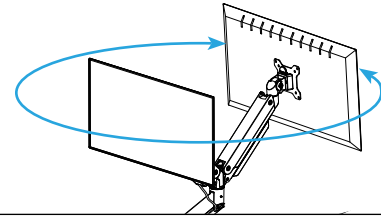
The Monitor can rotate at the VESA mount 180° (+/-90°) allowing landscape or portrait viewing.



---

## Upper Arm Swivel

The Upper Arm can swivel a full 360°. However, we do not recommend swiveling the monitor past the back of the desk as this may cause instability.

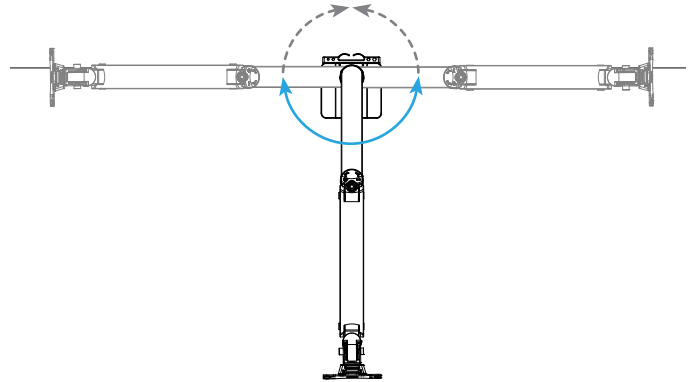


---

## Lower Arm Swivel

The Lower Arm can swivel a full 360° or can be set to allow only a range of 180°.

See Step 10 in the “Arm Assembly & Monitor Mounting” section for adjustment details.



## This image shows a full page of blank, lined paper. It features approximately 20 evenly spaced horizontal grey lines across its entire width, providing a guide for handwriting or typing. The background is a clean, solid white color.

## This image shows a full page of blank, lined paper. It features approximately 20 evenly spaced horizontal grey lines across its entire width, typical of notebook or school paper. There are no margins, text, or other markings present.



Work Better. Live Healthier

[upliftdesk.com](https://upliftdesk.com)

[info@upliftdesk.com](mailto:info@upliftdesk.com)

800-349-3839

512-614-3152

#### **SAVE THIS MANUAL**

Study this manual carefully. If this product is sold, please provide this manual to the buyer, installers, or support personnel operating the product.



Copyright Notice: This manual is a component of this UPLIFT Desk product. This manual is a part of the scope of delivery, even if the item is resold. This manual is also available on the UPLIFT Desk website: [upliftdesk.com](https://upliftdesk.com). This manual is subject to United States copyright law.